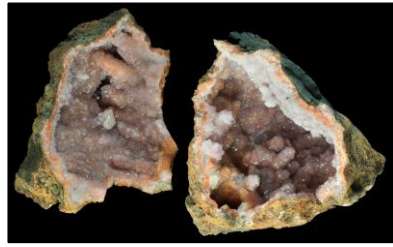


2026 BMC Mineral Auction

Catalog Section 1

(All photographs by Richard Cowley)



26-001 Amethyst Geode Pair

Two fitting halves of a complete geode with pale amethyst lining, one with a white calcite crystal.

13.7x13.3x11.2 cm

Locality unknown



26-002 Pyrite Grouping

Cluster of brassy, striated, complex cuboctahedral pyrites.

9.2x5.6x5.2 cm

Peru



26-003 Natrolite on Apophyllite

Jackstraw fine white natrolite needles on white apophyllite. 1998 Valentines pocket at the Weyerhouser Lincoln Cr. Quarry.

11.2x6.8x4.3 cm

Doty Hills, Lewis Co., Washington

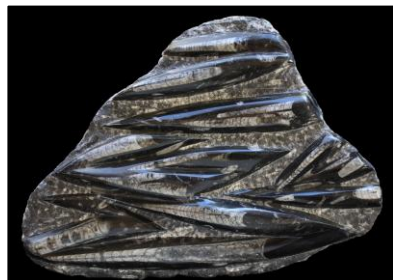


26-004 Cleavelandite

Unusual habit of sparkly white botryoidal mounds of cleavelandite from a New England locality. Ex Carolyn Reynard feldspar collection.

10.7x5.9x3.1 cm

Branchville Quarry, Branchville, Connecticut



26-005 Large *Orthoceras* Plate

Fine large cabinet specimen of *Orthoceras* fossils in dark gray limestone.

33x23x5 cm

Morocco



26-006 Sliced Laguna Agate Geode

Sawn and polished matching pair of banded Laguna Agate geodes, showing bands of red, orange and gray, with a core of crystallized quartz.

12.6x9.7x3.9 cm

Chihuahua, Mexico

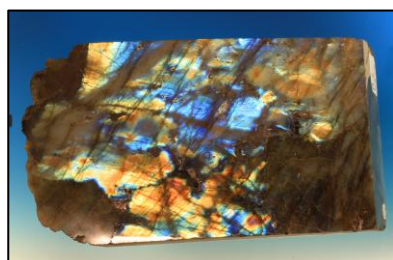


26-007 Rock Crystal Quartz

Nice grouping of sharp rock crystal quartz from the classic locality in Arkansas.

12.3x10.2x7.4 cm

Hot Springs area, Arkansas



26-008 Polished Labradorite Slab

Polished slab of coarse labradorite showing spectacular blue and yellow flash.

14.1x7.9x2.0 cm

Madagascar



26-009 Petrified Wood Bookends

Polished white, gray and brown banded petrified wood bookends, showing natural bark pattern on the outside.

10.8x10.1x3.0 cm

Utah



26-010 Amazonite

Large single crystal of Amazonite with several smaller sidecar crystals, all in the lovely sea green color for which Ethiopia is famous.

5.7x4.9x3.1 cm

Konso, Ethiopia

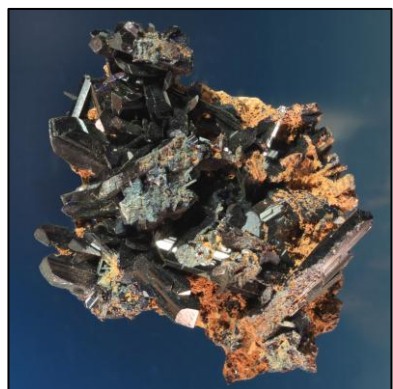


26-011 Red-Brown Calcite

Cluster of glassy calcite crystals tinted red-brown with hematite. Ex Steve Gerome, with StoneTrust label.

13.3x10.5x5.2 cm

Santa Eulalia, Chihuahua, Mexico



26-012 Azurite

Deep blue azurite crystal cluster from the famous Tsumeb Mine.

5.0x3.6x2.3 cm

Tsumeb Mine, SW Africa (now Namibia)



26-013 Legrandite

Legrandite is rare and is one of the more prized yellow minerals available. This impressive vug showing a legrandite cluster with smithsonite is courtesy of our friends at StoneTrust.

8.2x7.2x5.6 cm

Durango, Mexico



26-014 Rare *Mioplosus* Fish Fossil

The *Mioplosus* (extinct genus of perch) fossils found in the Green River Shale (Eocene, 35 million years ago) are far less common than the schools of *Knightia* typically found, and upon which they preyed. Usually solitary.

29x26x2 cm

Green River Formation, Wyoming

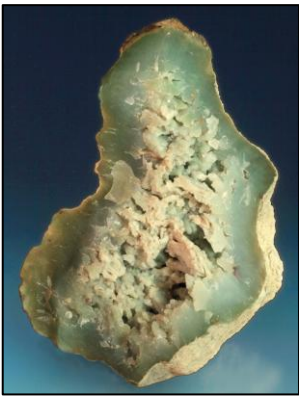


26-015 Large Petrified Wood Slice

Aesthetic large cabinet slice of brown petrified wood.

45x31x1 cm

Locality unknown



26-016 Chrysoprase Geode

Sea green chrysoprase geode lined with drusy quartz.

10.1x7.2x3.3 cm

East of Kalgoorlie, Western Australia



26-017 Native Elements Bundle

Arborescent silver from Canada, crystallized sulfur, native carbon as graphite, iron meteorite from Russia, and Michigan float copper.

7.2x5.2x4.0 cm

Miniature to Hand Specimens



26-018 Sikhote-Alin Ni-Fe Meteorite

Whole Ni-Fe meteorite with fusion crust, from the largest strewn field known. Witnessed fall on February 12, 1947. (ERV \$80)

3.7x3.0x1.2 cm

Sikhote-Alin, Russia

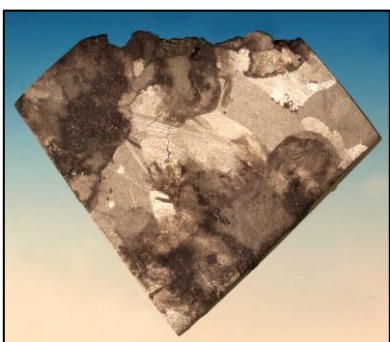


26-019 Chondrite Meteorite Slice

Unidentified chondrite meteorite slice with clear chondrules and minor iron grains. High quality and low alteration. (ERV \$50)

3.3x2.8x0.6 cm

Locality unknown, probably NW Africa

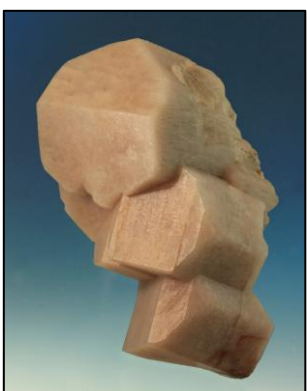


26-020 Seymchan Pallasite Slice

Slice of rare stony iron (Pallasite) meteorite with yellow-brown olivines in a metallic matrix. Pallasites come from the core-mantle boundary of early planetesimals which were subsequently shattered. Over 4.5 billion years old. (ERV \$135)

2.8x2.8x0.2 cm

Magadan Oblast, Russia



26-021 Microcline

Very fine cluster of three sharp, light tan microcline crystals. Ex Carolyn Reynard feldspar collection.

5.8x3.2x3.1 cm

Park Co., Colorado



26-022 Hematite Roses on Quartz

Classic specimen of silvery black hematite roses on white quartz.

7.6x6.1x4.1 cm

Guangdong, China



26-023 Megalodon Tooth

Megalodon shark tooth fossil. Very well preserved, with nice serrations, but missing one corner.

14.2x9.6x3.5 cm

Likely offshore North Carolina (no label)



26-024 Chalcocite

Nicely crystallized, shiny black chalcocite crystals on matrix, from the Cornwall mining district. Ex Don Schultz, Aimee Pfeiffer. Pala International label.

4.6x3.3x2.7 cm

Cook Kitchen Mine, Redrutu, Cornwall, England

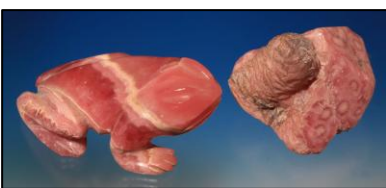


26-025 Baryte

Sparkly cluster of water-clear white baryte crystals. StoneTrust label.

7.8x3.9x2.6 cm

Not listed, but almost certainly from the Jinkouhe District, Sichuan, China



26-026 Polished Rhodochrosite and Frog Carving

Two polished red-pink rhodochrosite pieces. One is a small stalactite polished on one side to show the banding, and the other is a small carved frog figurine.

6.1x3.5x2.5 cm (Frog)

Likely Argentina



26-027 Amazonite

Large, showy pair of intense blue-green amazonite crystals. Ex Cilen, Betts, and Carolyn Reynard feldspar collection.

6.3x5.7x3.6 cm

Crystal Peak Area, Florissant County, Colorado



26-028 Adamite

Fine small plate of green adamite. Stands vertical on custom base. (Intense green under UV)

7.1x6.1x2.4 cm

Ojuela Mine, Mapimi, Mexico



26-029 Ammolite

Ammolite, the colorful preserved nacre found rarely in ammonite fossils, is a highly prized lapidary gem. This example shows a rainbow flash from red to orange to yellow to green. (ERV \$1500)

6.7x2.5x1.7 cm

Alberta, Canada

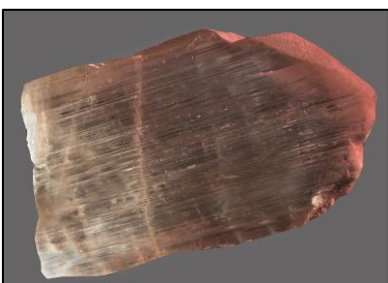


26-030 Pale Bluish Orthoclase and Quartz

A superb sculptural piece consisting of a large, twinned, pale bluish-white orthoclase rising from a gray quartz crystal. Ex Carolyn Reynard feldspar collection.

8.6x7.9x6.1 cm

Mogok Sagaing, Mandalay, Myanmar (formerly Burma)



26-031 Kunzite Spodumene Blade

Gemmy pale pink kunzite blade with a thin white spodumene tip. Ex Jack Nieburger collection (M-2180). Kristalle label.

9.9x5.5x0.9 cm

Afghanistan



26-032 Aragonite "Dragon Face"

Large stalactitic mass of brown aragonite, sliced on 2 sides, appearing vaguely like a dragon face. Likely a new country for most mineral collections.

13.9x7.5x7.1 cm

Aruba, Lesser Antilles, Southern Caribbean Sea

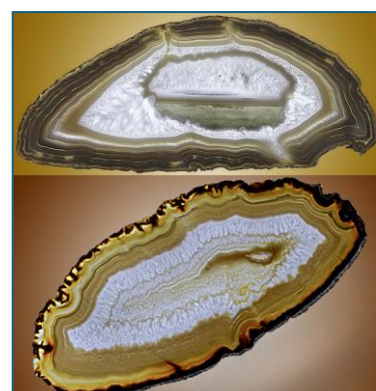


26-033 Bed of Citrine Quartz Crystals

The surface of this piece is coated with white quartz with lovely citrine yellow tips. Similar to those from Charcas in Mexico, but label is missing.

22x15x7 cm

Possibly Mexico



26-034 Banded Agate Geode Slices

Two banded white-yellow-brown agates, sliced so thin as to be translucent. (Dimensions for the larger bottom one.)

22.4x10.6x0.4 cm

Location unknown



26-035 Cleavelandite

Mound of curved, pearly white cleavelandite blades from a famous tourmaline mine in California. Ex Carolyn Reynard feldspar collection.

6.9x6.5x3.9 cm

Stewart Mine, Pala District, San Diego Co., California



26-036 Chondrite Meteorite End Slice

Nice end slice of an unidentified chondrite meteorite, showing one polished face and one with natural fusion crust. (ERV \$50)

3.3x3.2x0.5 cm

Location unknown, likely NW Africa



26-037 Marcasite, Chalcopyrite on Calcite and Fluorite

Unusual looped marcasite, for which this locality is famous, with chalcopyrite on calcite and fluorite. Old Wright's Rock Shop label.

16.5x9.4x7.8 cm

Minerva Mine, Hardin County, Illinois

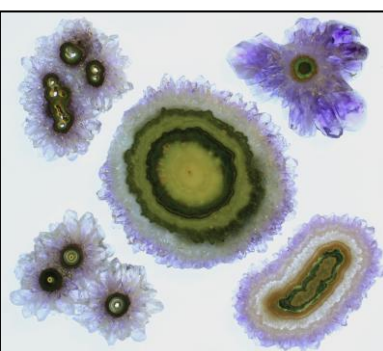


26-038 Rare *Priscacara* Fossil Fish

The toothed *Priscacara liops* (extinct variety of perch) fossils found in the Green River Shale (Eocene, 35 million years ago) are far less common than the schools of smaller *Knightia* typically found.

31.5x23.5x0.8 cm

Green River Formation, Wyoming



26-039 Six Amethyst Stalactite Slices

Six different slices through amethyst crystal "stalactites" on basalt. Dimensions for largest.

8.1x7.9x0.6 cm

Brazil



26-040 Cleavelandite

Nicely sculptural upright 3D cluster of pearly white cleavelandite blades, mounted on a stand. Ex Carolyn Reynard feldspar collection.

7.6x5.9x5.3 cm

Virgem de Lapa, Minas Gerais, Brazil

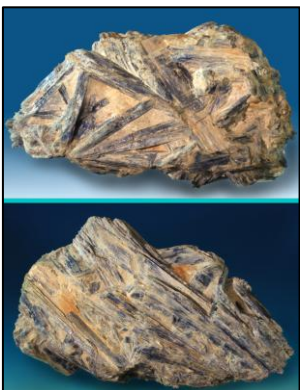


26-041 Canyon Diablo Meteorite

Nice example of the Canyon Diablo meteorite, which created Meteor Crater in Arizona. Ni-Fe octahedrite (IA). Ex Bob Hiller, Don Schultz and Aimee Pfeiffer. (ERV \$120)

6.1x4.9x2.7 cm

Coconino Co., Arizona



26-042 Kyanite

Attractive cabinet specimen of bright blue kyanite in white quartz. (Photos of front and back.)

16.9x9.8x5.8 cm

Brazil



26-043 Diopside

Deep green diopside crystals from the Copper Crescent in Africa.

5.1x3.2x2.6 cm

Kakoveld Plateau, SW Africa (now Namibia)



26-044 Amethyst "Flower"

A delicate spray of pale amethyst crystals resembling a flower.

16.9x6.9x2.6 cm

Ametista do Sol, Brazil



26-045 Benitoite and Neptunite

Sapphire blue crystals of benitoite, with black neptunite, etched out of white natrolite, on matrix. From the defunct type locality.

6.3x2.0x1.4 cm

Gem Mine, San Benito Co., California



26-046 Amazonite

Intense blue-green cluster of amazonite crystals. Ex Carolyn Reynard feldspar collection.

7.6x4.8x4.0 cm

Crystal Creek, Colorado

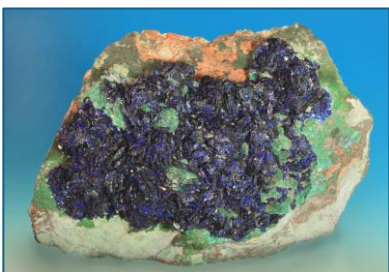


26-047 Wingate Pass "Death Valley" Plume Agate

Two Slices of colorful plume agate from Wingate Pass near Death Valley. (ERV \$150)

5.7x5.4x0.5 cm

Wingate Pass, Death Valley, California



26-048 Azurite and Malachite

11.8x7.5x5.4 cm

Cabinet specimen showing a carpet of intense blue azurite on contrasting malachite, from the famous Arizona locality. One of the highlights our auction, courtesy of our friends at StoneTrust.

Morenci, Arizona



26-049 Brown Fluorite

5.9x4.7x3.3 cm

Sharp and glassy zoned fluorite (yellow-brown cores and clear rims), with sparkly marcasite accents. Collected August 2013. Very fine for this locality. Core fluoresces whitish yellow under SW UV. Ex John Elliot, Don Schultz, and Aimee Pfeiffer.

Framboro Quarry, Dundas, Ontario, Canada



26-050 Scyphocrinites Crinoid Fossil

28.4x22.8x2.5 cm

Very showy example of the famous Devonian Scyphocrinites crinoid fossils from Morocco, expertly reassembled and stabilized (as is typical) from fragments of this crumbly mudstone.

Morocco

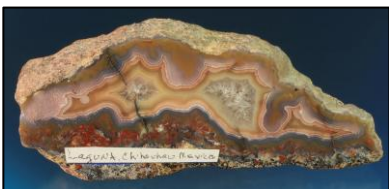


26-051 Diamond in Kimberlite (repaired)

6.1x4.9x4.0 cm

Small white diamond crystal restored on kimberlite matrix. The Rocksmiths label.

Helam Mine, West Transvaal, South Africa



26-052 Colorful Polished Laguna Agate

11.7x5.1x2.1 cm

Very aesthetic polished slice of banded Laguna Agate, showing bands of pink, gold, brown and gray, with a core of crystallized quartz.

Chihuahua, Mexico



26-053 Bournonite and Quartz

9.1x7.3x3.6 cm

Excellent specimen of shiny bournonite crystals on jackstraw white quartz from the famous Chinese locality.

Yaogangxian Mine, Yizhang Co., Chenzhou, Hunan, China



26-054 Gemmy Pink Tourmaline

3.4x1.3x1.0 cm

Very fine and gemmy pink tourmaline crystal from the famous Pala pegmatites in Southern California. Ex Bill Pinch, Aimee Pfeiffer.

Pala, San Diego Co., California