

Specimen Number Lot No. Donor/Consignor No

Specimen Name

Specimen Location

SpecimenType

Auction Type

Length

Width

Height

Weight (g)

Specimen Dimensions

Don/Con

Mineral Data

Photo 1



Photo 2

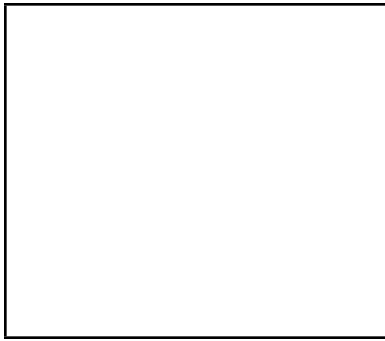
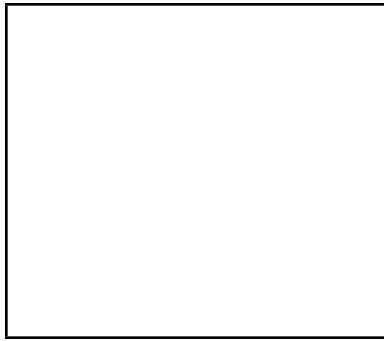


Photo 3



Specimen Number Lot No. Donor/Consignor No

Specimen Name

Specimen Location

SpecimenType

Auction Type

Length

Width

Height

Weight (g)

Specimen Dimensions

Don/Con

Mineral Data

Photo 1

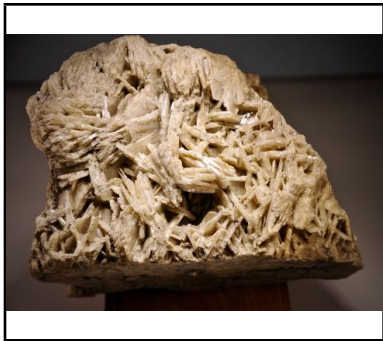


Photo 2

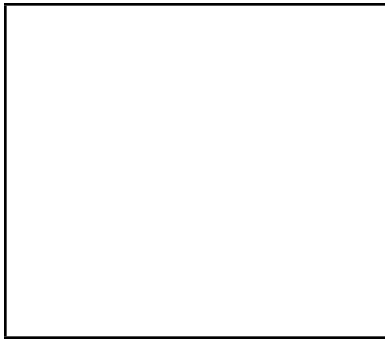
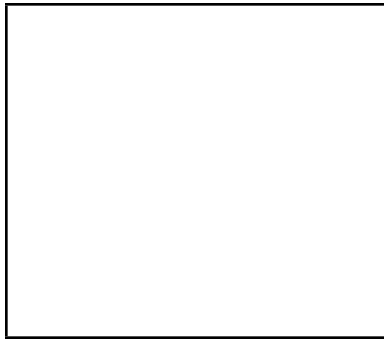


Photo 3



Photographed by:

Specimen Number Lot No. Donor/Consignor No

Specimen Name

Specimen Location

SpecimenType

Auction Type

Length

Width

Height

Weight (g)

Specimen Dimensions

Don/Con

Mineral Data

Photo 1



Photo 2

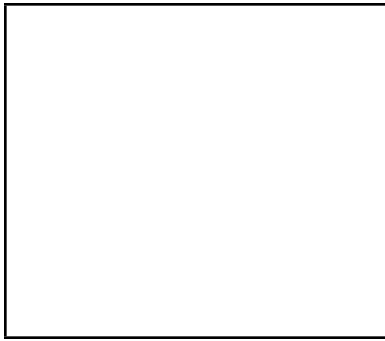
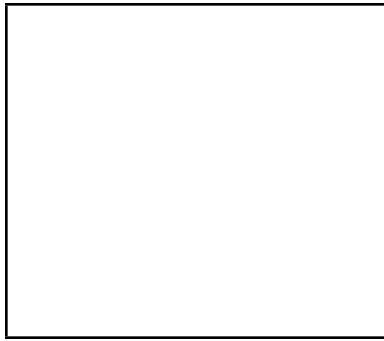


Photo 3



Specimen Number Lot No. Donor/Consignor No

Specimen Name

Specimen Location

SpecimenType

Auction Type

Length Width Height Weight (g)

Specimen Dimensions Don/Con

Mineral Data

Photo 1



Photo 2



Photo 3



Specimen Number Lot No. Donor/Consignor No

Specimen Name

Specimen Location

SpecimenType

Auction Type

Length Width Height Weight (g)

Specimen Dimensions Don/Con

Mineral Data

Photo 1



Photo 2

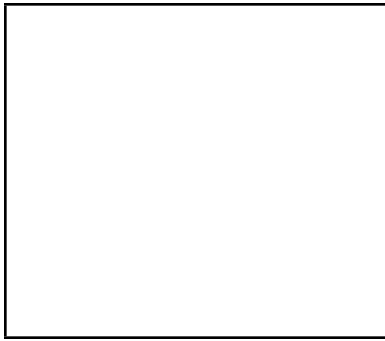
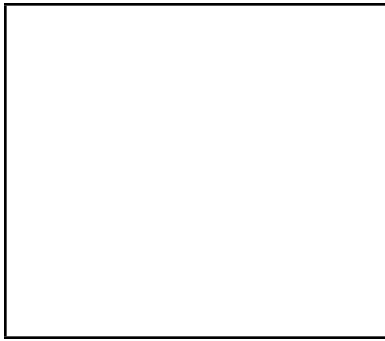


Photo 3



Specimen Number Lot No. Donor/Consignor No

Specimen Name

Specimen Location

SpecimenType

Auction Type

Length Width Height Weight (g)

Specimen Dimensions Don/Con

Mineral Data

Photo 1



Photo 2

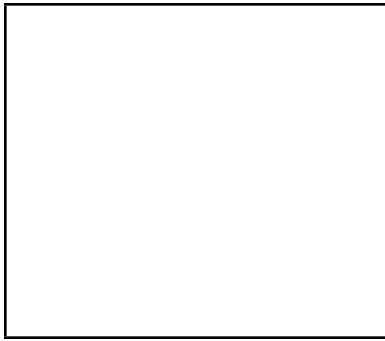
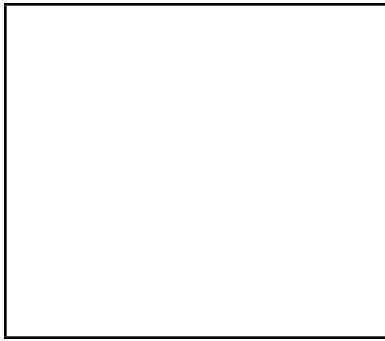


Photo 3



Specimen Number Lot No. Donor/Consignor No

Specimen Name

Specimen Location

SpecimenType

Auction Type

Length Width Height Weight (g)

Specimen Dimensions Don/Con

Mineral Data

Photo 1



Photo 2

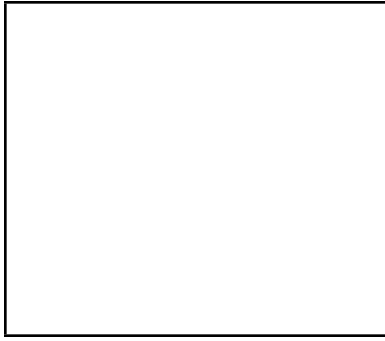
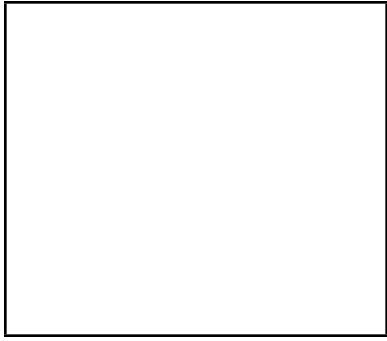


Photo 3



Specimen Number Lot No. Donor/Consignor No

Specimen Name **Biotite Muscovite**

Specimen Location **Large book of silvery muscovite with an interior phantom of dark brown biotite.Emmons Mine, ME ex Bill DeVasher**

SpecimenType

Auction Type Voice Auction

Length Width Height Weight (g)

Specimen Dimensions Don/Con

Mineral Data

Photo 1



Photo 2

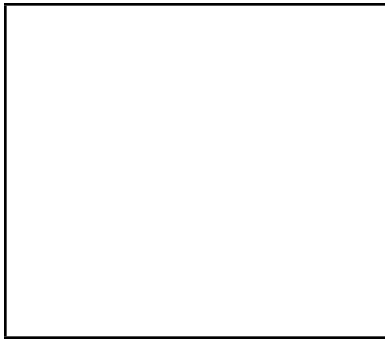
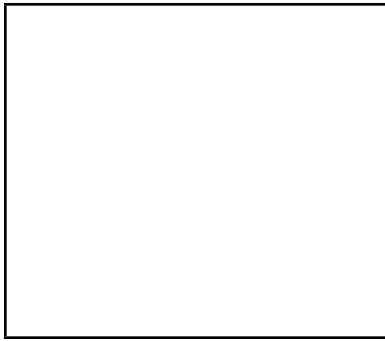


Photo 3



Photographed by: Michael Haritos

Specimen Number Lot No. Donor/Consignor No

Specimen Name **Pastel Pyrope Garnet (2 pieces)(1 piece is 10.7 carats with a rough color change, 1 piece is 1.53 carats faceted round color change pastel pyrope spiral cut. Also a copy of Gems and Gemology Winter 2019 Meg Berry (Gemologist)**

Specimen Location **Morogoro, Tanzania, The spessartite-grossular-pyrope color-change garnet exhibits a change of color from light bluish green in transmitted fluorescent light to purple in reflected fluorescent light. In incandescent light, the color is light red to purplish red. The refractive index is 1.763 with a specific gravity norm of 3.89.**

SpecimenType

Auction Type Voice Auction

Length Width Height Weight (g)

Specimen Dimensions Don/Con

Mineral Data

Photo 1



Photo 2

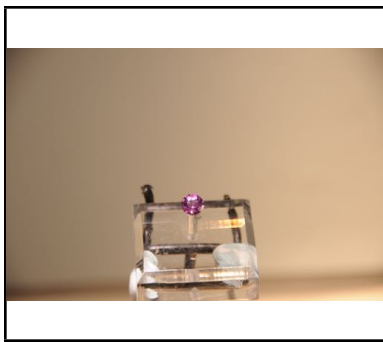
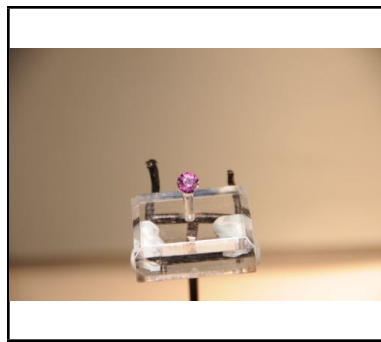


Photo 3



Photographed by:

Specimen Number Lot No. Donor/Consignor No

Specimen Name

Specimen Location

SpecimenType

Auction Type

Length Width Height Weight (g)

Specimen Dimensions Don/Con

Mineral Data

Photo 1

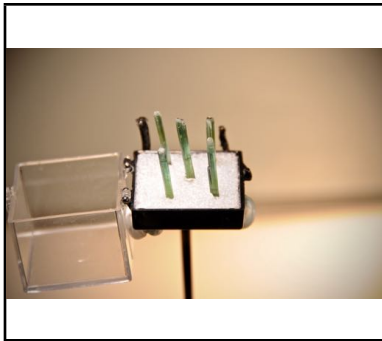


Photo 2

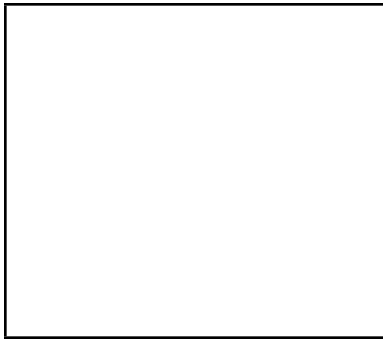
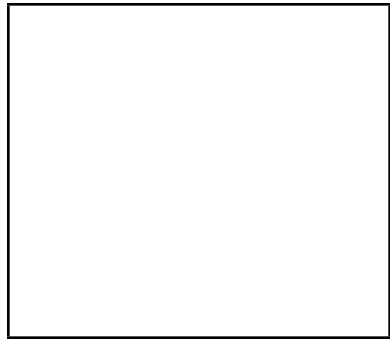


Photo 3



Specimen Number Lot No. Donor/Consignor No

Specimen Name

Specimen Location

SpecimenType

Auction Type

Length Width Height Weight (g)

Specimen Dimensions Don/Con

Mineral Data

Photo 1



Photo 2

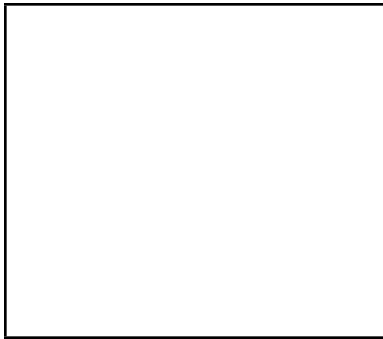


Photo 3



Specimen Number Lot No. Donor/Consignor No

Specimen Name

Specimen Location

SpecimenType

Auction Type

Length Width Height Weight (g)

Specimen Dimensions Don/Con

Mineral Data

Photo 1



Photo 2



Photo 3



Specimen Number Lot No. Donor/Consignor No

Specimen Name

Specimen Location

SpecimenType

Auction Type

Length Width Height Weight (g)

Specimen Dimensions Don/Con

Mineral Data

Photo 1



Photo 2

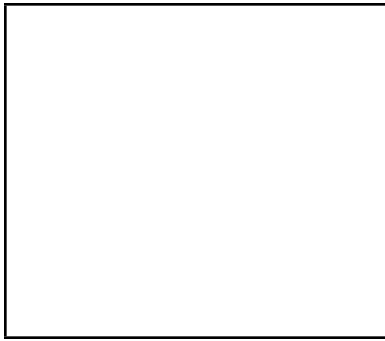
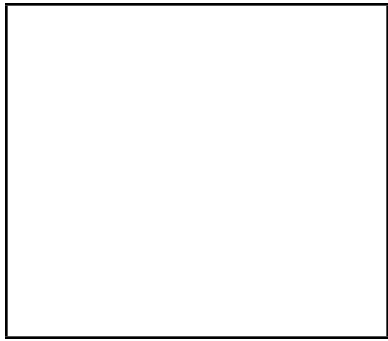


Photo 3



Specimen Number Lot No. Donor/Consignor No

Specimen Name

Specimen Location

SpecimenType

Auction Type

Length Width Height Weight (g)

Specimen Dimensions Don/Con

Mineral Data

Photo 1

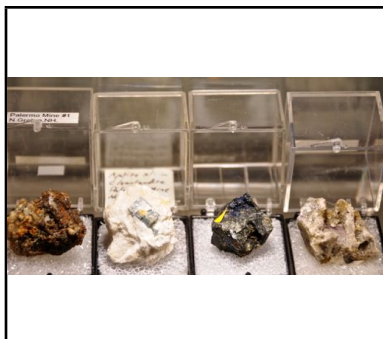


Photo 2

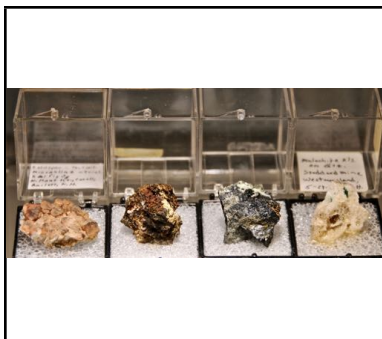


Photo 3



Specimen Number Lot No. Donor/Consignor No

Specimen Name

Specimen Location

SpecimenType

Auction Type

Length Width Height Weight (g)

Specimen Dimensions Don/Con

Mineral Data

Photo 1

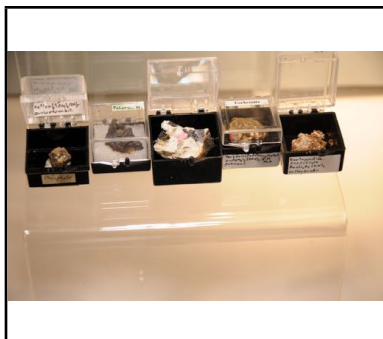


Photo 2



Photo 3



Photographed by:

Specimen Number Lot No. Donor/Consignor No

Specimen Name

Specimen Location

SpecimenType

Auction Type

Length Width Height Weight (g)

Specimen Dimensions Don/Con

Mineral Data

Photo 1

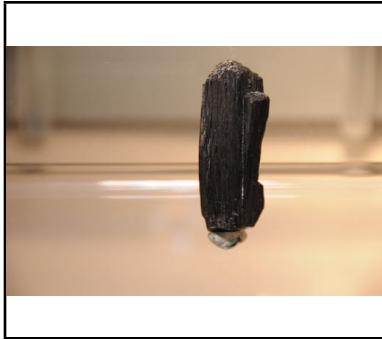


Photo 2

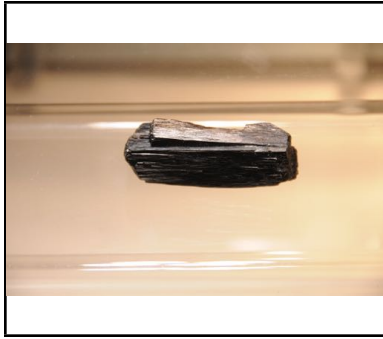
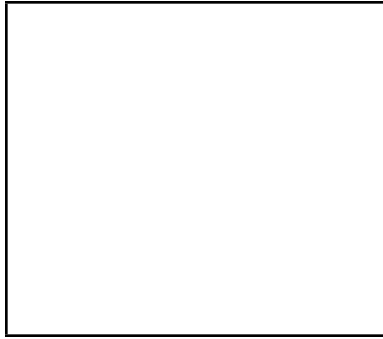


Photo 3



Specimen Number Lot No. Donor/Consignor No

Specimen Name **Cassiterite**

Specimen Location **Black cassiterite and feldspar on matrix, from the Dunton Mine in Newry, ME.
Ex David Zucker**

SpecimenType

Auction Type Voice Auction

Length Width Height Weight (g)

Specimen Dimensions Don/Con

Mineral Data

Photo 1



Photo 2

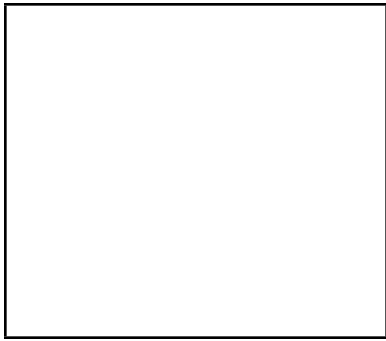
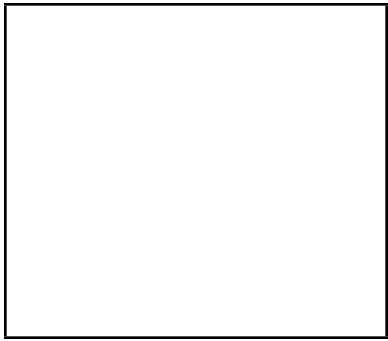


Photo 3



Photographed by: Michael Haritos

Specimen Number Lot No. Donor/Consignor No

Specimen Name **Elbaite TN**

Specimen Location **Sharp terminated crystal, gemmy in parts, of reddish-brown elbaite from Minas Gerais in Brazil. Ex David Zucker**

SpecimenType

Auction Type

Length Width Height Weight (g)

Specimen Dimensions Don/Con

Mineral Data

Photo 1

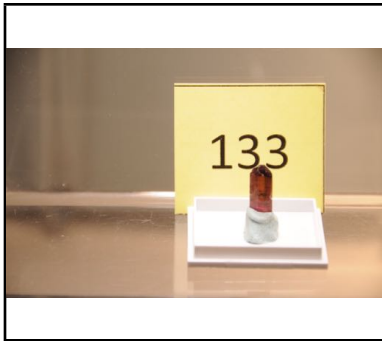


Photo 2

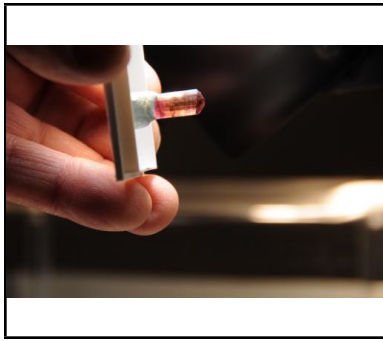
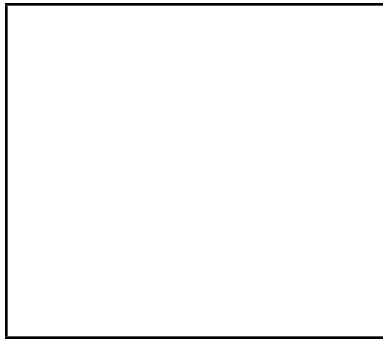


Photo 3



Photographed by:

Specimen Number Lot No. Donor/Consignor No

Specimen Name

Specimen Location

SpecimenType

Auction Type

Length Width Height Weight (g)

Specimen Dimensions Don/Con

Mineral Data

Photo 1

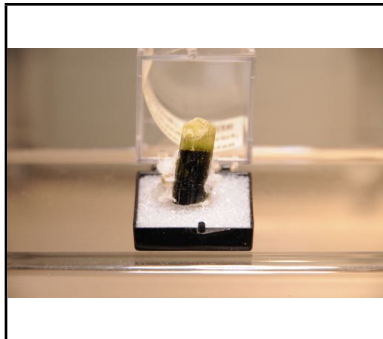


Photo 2

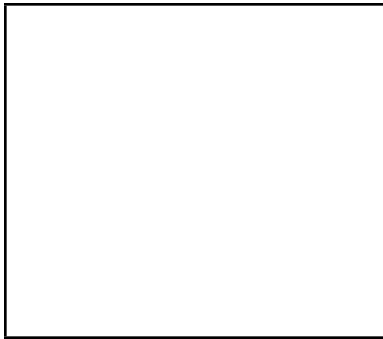


Photo 3



Specimen Number Lot No. Donor/Consignor No

Specimen Name

Specimen Location

SpecimenType

Auction Type

Length

Width

Height

Weight (g)

Specimen Dimensions

Don/Con

Mineral Data

Photo 1



Photo 2

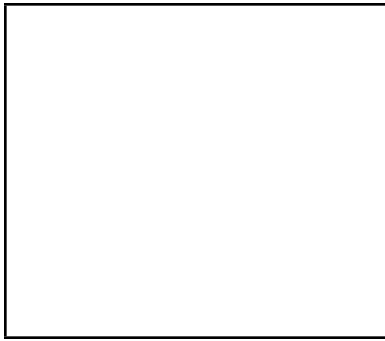
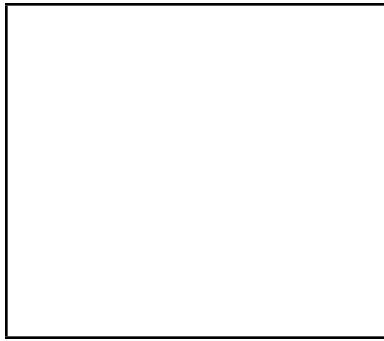


Photo 3



Photographed by:

Specimen Number Lot No. Donor/Consignor No

Specimen Name

Specimen Location

SpecimenType

Auction Type

Length Width Height Weight (g)

Specimen Dimensions Don/Con

Mineral Data

Photo 1



Photo 2

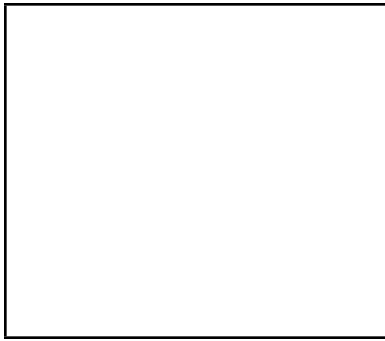
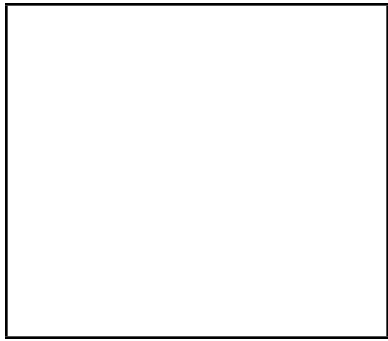


Photo 3



Specimen Number Lot No. Donor/Consignor No

Specimen Name **Sphaerocobaltite TN**

Specimen Location **Intense bubblegum pink thumbnail consisting of a sparkly coating of spherocobaltite crystals from the mineral-rich Katanga Province of the Democratic Republic of Congo (formerly Zaire).**

SpecimenType

Auction Type

Length Width Height Weight (g)

Specimen Dimensions Don/Con

Mineral Data

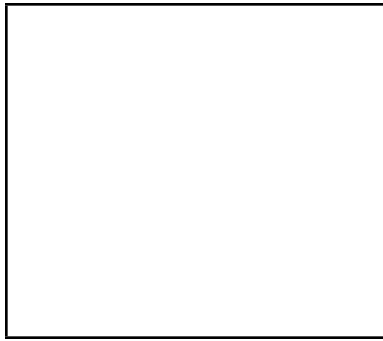
Photo 1



Photo 2



Photo 3



Photographed by:

Specimen Number Lot No. Donor/Consignor No

Specimen Name **Rhodocrosite TN**

Specimen Location **Solitary rhomb of pinkish-red rhodochrosite from the world famous Sweet Home Mine in Alma, CO.**

SpecimenType

Auction Type Voice Auction

Length Width Height Weight (g)

Specimen Dimensions Don/Con

Mineral Data

Photo 1

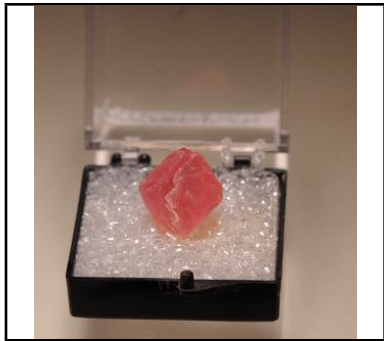


Photo 2

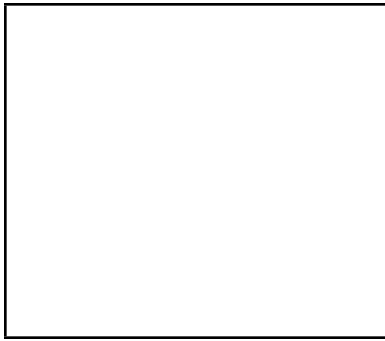
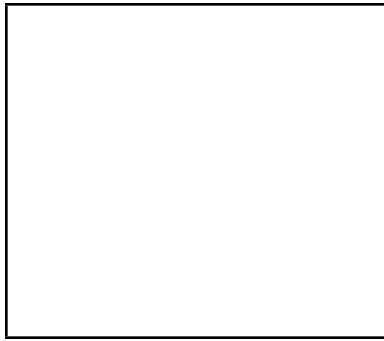


Photo 3



Photographed by: Michael Haritos

Specimen Number Lot No. Donor/Consignor No

Specimen Name **Jadeite**

Specimen Location **Sliced and polished beach cobble of intense apple green jadeite. The locality is not listed, but the tag suggests it was purchased in Hong Kong, suggesting it may be Chinese.**

SpecimenType

Auction Type Voice Auction

Length Width Height Weight (g)

Specimen Dimensions Don/Con

Mineral Data

Photo 1



Photo 2

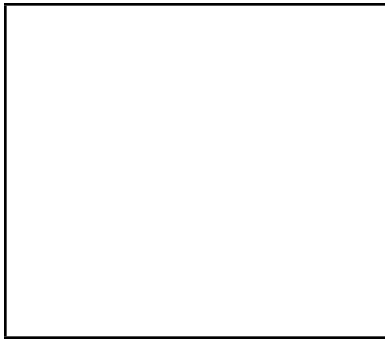
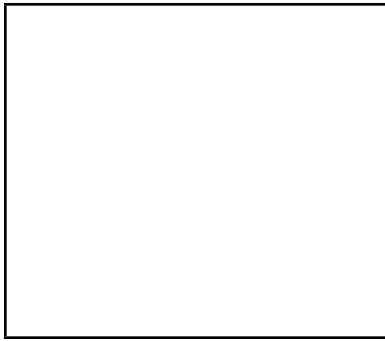


Photo 3



Photographed by: Michael Haritos

Specimen Number Lot No. Donor/Consignor No

Specimen Name

Specimen Location

SpecimenType

Auction Type

Length

Width

Height

Weight (g)

Specimen Dimensions

Don/Con

Mineral Data

Photo 1



Photo 2



Photo 3



Photographed by:

Specimen Number Lot No. Donor/Consignor No

Specimen Name

Specimen Location

SpecimenType

Auction Type

Length Width Height Weight (g)

Specimen Dimensions Don/Con

Mineral Data

Photo 1



Photo 2

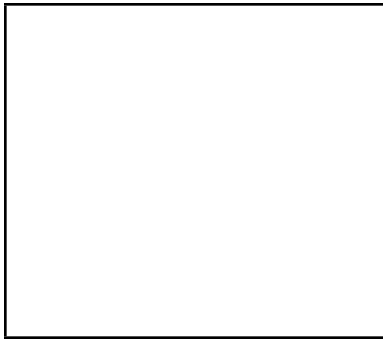
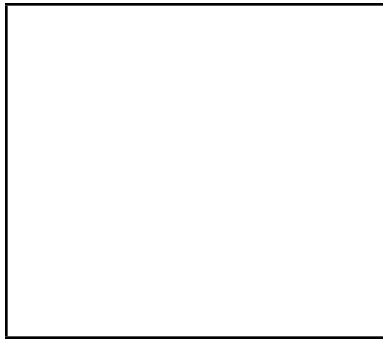


Photo 3



Specimen Number Lot No. Donor/Consignor No

Specimen Name

Specimen Location

SpecimenType

Auction Type

Length Width Height Weight (g)

Specimen Dimensions Don/Con

Mineral Data

Photo 1

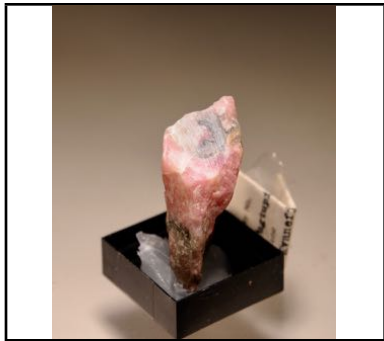


Photo 2

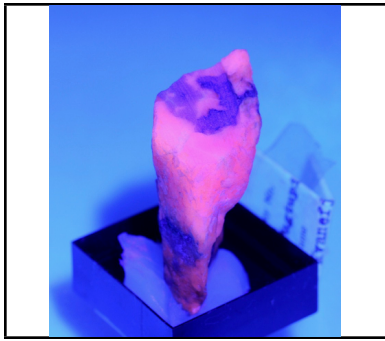
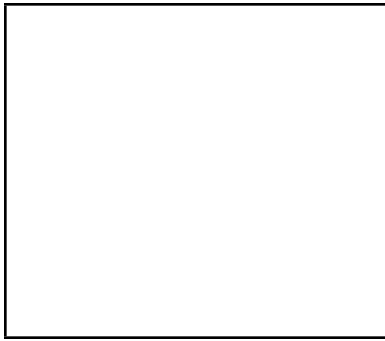


Photo 3



Photographed by:

Specimen Number Lot No. Donor/Consignor No

Specimen Name

Specimen Location

SpecimenType

Auction Type

Length Width Height Weight (g)

Specimen Dimensions Don/Con

Mineral Data

Photo 1



Photo 2

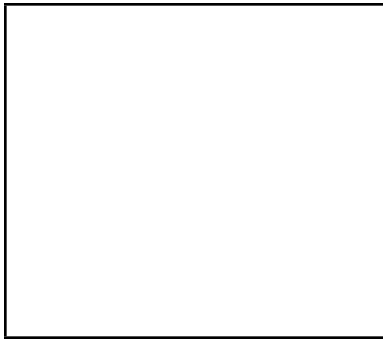


Photo 3



Specimen Number Lot No. Donor/Consignor No

Specimen Name **Chert var. Flint**

Specimen Location **Flint is a sedimentary cryptocrystalline form of the mineral quartz. A classic example of a gray flint nodule from the White Cliffs of Dover, in England, which was transported to New Hampshire as ballast aboard an old sailing vessel.**

SpecimenType

Auction Type Voice Auction

Length Width Height Weight (g)

Specimen Dimensions Don/Con

Mineral Data

Photo 1



Photo 2

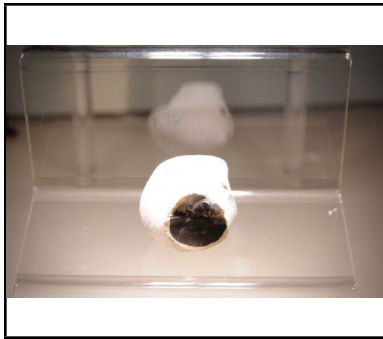
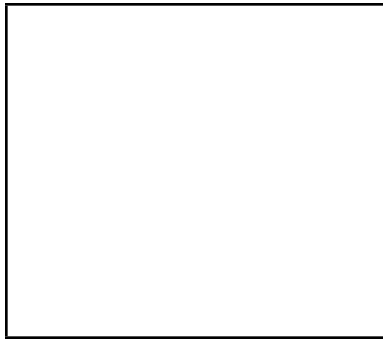


Photo 3



Photographed by: Michael Haritos

Specimen Number Lot No. Donor/Consignor No

Specimen Name **Sphalerite TN**

Specimen Location **A lustrous miniature of shiny blackish-brown sphalerite crystals on gray limestone matrix from the Elmwood Mine in TN**

SpecimenType

Auction Type Voice Auction

Length

Width

Height

Weight (g)

Specimen Dimensions

Don/Con

Mineral Data

Photo 1

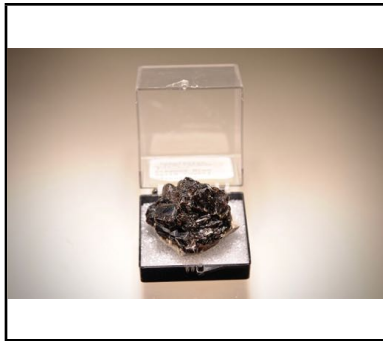


Photo 2

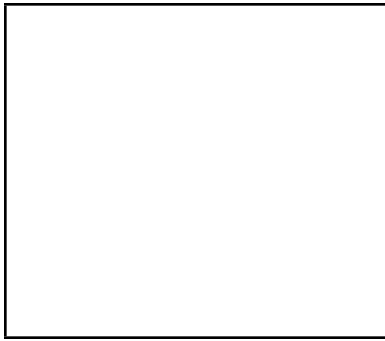
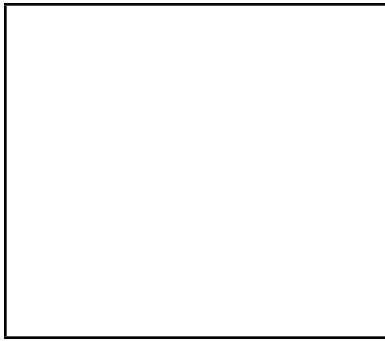


Photo 3



Photographed by: Michael Haritos

Specimen Number Lot No. Donor/Consignor No

Specimen Name **Baryte**

Specimen Location Very fine miniature of translucent white barite blades on matrix, from the Minerva #1 Mine in southern IL

SpecimenType

Auction Type Voice Auction

Length Width Height Weight (g)

Specimen Dimensions Don/Con

Mineral Data

Photo 1



Photo 2

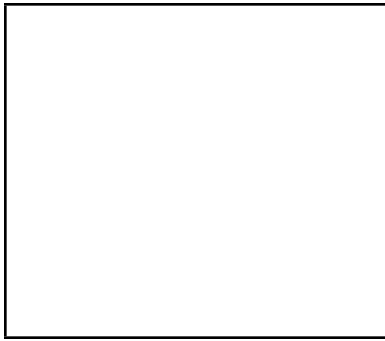
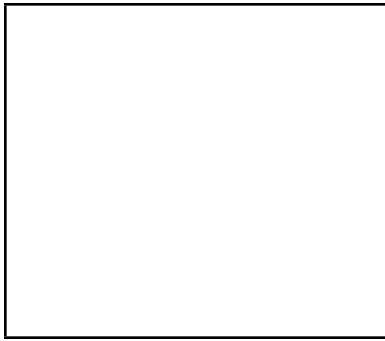


Photo 3



Photographed by: Michael Haritos

Specimen Number Lot No. Donor/Consignor No

Specimen Name **Calcite on Fluorite TN**

Specimen Location **A miniature showing a cluster of honey-yellow, doubly terminated calcites perched atop bright purple fluorite in a classic combo piece from the Denton Mine in Hardin County, IL.**

SpecimenType

Auction Type Voice Auction

Length Width Height Weight (g)

Specimen Dimensions Don/Con

Mineral Data

Photo 1



Photo 2

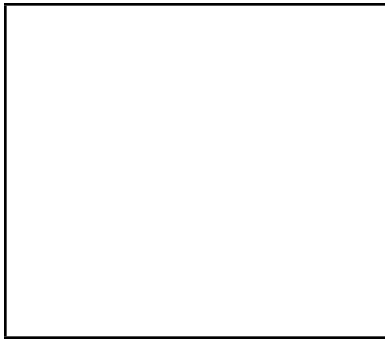
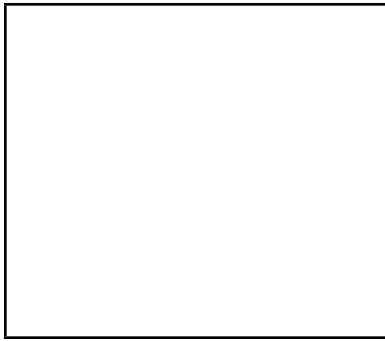


Photo 3



Specimen Number 2022-148 Lot No. Donor/Consignor No 7

Specimen Name Lot of 9 TNs

Specimen Location Descloizite TN from Berg Aukas; purple tanzanite TN from Tanzania; blue shattuckite TN from Namibia; yellow wulfenite TN from Tuisit, Morocco; staurolite cross TN from Madagascar; pink fluor-liddicoatite tourmaline TN from Madagascar; miniature ball of hexagonal aragonite prisms from Morocco; green diopside TN from Namibia; miniature hexagonal prism of reddish-purple corundum (ruby) from Tanzania; and a miniature of green and white ocean jasper from Madagascar.

SpecimenType Donation

Auction Type Voice Auction

Length Width Height Weight (g)

Specimen Dimensions Don/Con

Mineral Data

Photo 1



Photo 2



Photo 3



Photographed by: Michael Haritos

Specimen Number 2022-149 Lot No. Donor/Consignor No 7

Specimen Name Lot of 11 TNs

Specimen Location Gemmy pale yellow spodumene from Tanzania; sphenomangite and sturmanite from South Africa; torbernite from Katanga; sturmanite from South Africa; ruby corundum from Madagascar; dravite from Tanzania; strengite and caxoxenite from Red Ball Quarry, AL; roselite from Morocco; aegerine from Malawi; erythrite from Morocco; phenakite from Madagascar.

SpecimenType Donation

Auction Type Voice Auction

Length Width Height Weight (g)

Specimen Dimensions Don/Con

Mineral Data

Photo 1



Photo 2

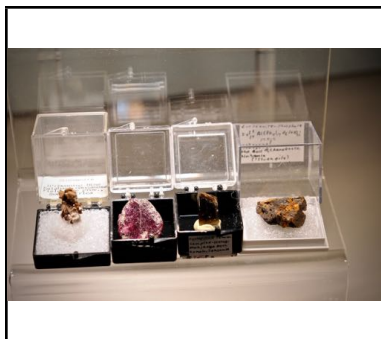


Photo 3



Photographed by: Michael Haritos

Specimen Number Lot No. Donor/Consignor No

Specimen Name

Specimen Location

SpecimenType

Auction Type

Length Width Height Weight (g)

Specimen Dimensions Don/Con

Mineral Data

Photo 1



Photo 2



Photo 3



Photographed by:

Specimen Number Lot No. Donor/Consignor No

Specimen Name

Specimen Location

SpecimenType

Auction Type

Length Width Height Weight (g)

Specimen Dimensions Don/Con

Mineral Data

Photo 1



Photo 2



Photo 3



Photographed by:

Specimen Number 2022-152 Lot No. Donor/Consignor No 7

Specimen Name Lot of 9 TNs

Specimen Location Gaidonnayite, MSH, Quebec Fluorite, Quartz, Marcasite, Dawsonite Francon Q. Quebec, Lorenzenite MSH Quebec, Rhodochrosite MSH Quebec. Dawsonite & Fluorite Francon Q. Quebec. Weloganite Francon Q. Quebec. Arfedsonite MSH Quebec. Carletonite, Acmite on Fluorite MSH Q. Analcime DeMix Q, Quebec

SpecimenType Donation

Auction Type Voice Auction

Length Width Height Weight (g)

Specimen Dimensions Don/Con

Mineral Data

Photo 1



Photo 2



Photo 3



Photographed by: Michael Haritos

Specimen Number Lot No. Donor/Consignor No

Specimen Name

Specimen Location

SpecimenType

Auction Type

Length Width Height Weight (g)

Specimen Dimensions Don/Con

Mineral Data

Photo 1



Photo 2



Photo 3



Photographed by:

Specimen Number Lot No. Donor/Consignor No

Specimen Name

Specimen Location

SpecimenType

Auction Type

Length Width Height Weight (g)

Specimen Dimensions Don/Con

Mineral Data

Photo 1



Photo 2



Photo 3



Photographed by:

Specimen Number 2022-155 Lot No. Donor/Consignor No 7

Specimen Name Lot of 11 TNs

Specimen Location Hemimorphite Durango, Mex. Boleite Baja CA. Wulfenite, Mex. Epidote Sonora, Mex. Wulfenite & Mimetite Sonora, Mex. Amethyst Vera Cruz, Mex. Mackayite Sonora, Mex. Danburite Charcas, Mex. Adamite Oaxaca, Mex. Goethite Lampazos, Mex. Legrandite Ojuela, Mex.

SpecimenType Donation

Auction Type Voice Auction

Length Width Height Weight (g)

Specimen Dimensions Don/Con

Mineral Data

Photo 1



Photo 2



Photo 3



Photographed by: Michael Haritos

Specimen Number 2022-156 Lot No. Donor/Consignor No 7

Specimen Name Lot of 11 TNs

Specimen Location Cuprite, Silver Bell M. AZ. Arsandescloizite Valmy NV. Spessertine Ruby Mtn. CO. Quartz Sierra Blanca, NM. Nissonite San Benito, CA. Azurite Grant CO. NM. Covellite Summitville CO. Metavariscite Lucin, UT. Topaz Juab Co. UT. Fluorite on Quartz Alma CO. Siderite in Basalt,OR

SpecimenType Donation

Auction Type Voice Auction

Length Width Height Weight (g)

Specimen Dimensions Don/Con

Mineral Data

Photo 1

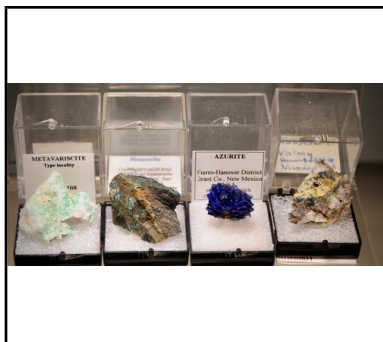


Photo 2



Photo 3



Photographed by: Michael Haritos

Specimen Number 2022-157 Lot No. Donor/Consignor No 7

Specimen Name Lot of 10 TNs

Specimen Location Bixbyite Juab Co UT. Natrolite San Benito CA. Bixbyite Juab Co. UT. Riebeckite Mt Rosa CO. Clinoclase Majuba Hill, NV. Mottramite Pina Co. AZ. Martite Millard City UT. Relgar King Co. WA. Lepidolite Gunnison CO. Aurchalcite Omega Mn. CO.

SpecimenType Donation

Auction Type Voice Auction

Length Width Height Weight (g)

Specimen Dimensions Don/Con

Mineral Data

Photo 1



Photo 2



Photo 3



Photographed by: Michael Haritos

Specimen Number 2022-158 Lot No. Donor/Consignor No 7

Specimen Name Lot of 9 TNs

Specimen Location Fluorapatite Oxford Co. ME. Staurolite Cumberland City ME. Torumaline Mt. Mica ME. Fluorite on Quartz Westmorland NH. Anatase Pleasant MT. Denmark ME. Columbite MT Marie Paris, ME. Tantalite Emons Q. Oxford ME. Cookeite MT Apatite ME. Cookeite Tamminen Q. Oxford ME

SpecimenType Donation

Auction Type Voice Auction

Length Width Height Weight (g)

Specimen Dimensions Don/Con

Mineral Data

Photo 1



Photo 2



Photo 3



Photographed by: Michael Haritos

Specimen Number Lot No. Donor/Consignor No

Specimen Name

Specimen Location

SpecimenType

Auction Type

Length Width Height Weight (g)

Specimen Dimensions Don/Con

Mineral Data

Photo 1



Photo 2



Photo 3



Photographed by:

Specimen Number Lot No. Donor/Consignor No

Specimen Name

Specimen Location

SpecimenType

Auction Type

Length Width Height Weight (g)

Specimen Dimensions Don/Con

Mineral Data

Photo 1



Photo 2



Photo 3



Specimen Number 2022-161 Lot No. Donor/Consignor No 7

Specimen Name Lot of 10 TNs

Specimen Location Natrolite Simmons Bay Australia. Cinnabar Guizhou Prov. China. Dioptase Kazakhstan. Stony Iron Pallasite N.T. Australia. Stibnite Hunan China. Chalcedony Indonesia. Azurite Guangdong China. Sillimanite, India. Cerussite & Dundarsite Tasmania, Australia. Cerussite & Dundarsite Tasmania Australia.

SpecimenType Donation

Auction Type Voice Auction

Length Width Height Weight (g)

Specimen Dimensions Don/Con

Mineral Data

Photo 1

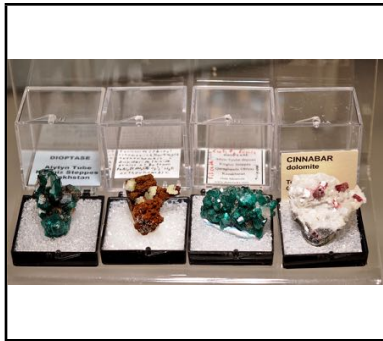


Photo 2



Photo 3



Photographed by: Michael Haritos

Specimen Number

2022-162

Lot No.

Donor/Consignor No

1

Specimen Name

Lot of 10 TNs

Specimen Location

Uvarovite Finland. Erionite New Zealand. Siderite Wales. Garnierte New Caladonia. Copper Cornwall England. Periclase Campani Italy. Cornwallite & Fluorite Black Forest. Ottrelite Luxembourg Prov. Belgium. Cervantite Germany. Pyromorphite Cumberland, England.

SpecimenType

Donation

Auction Type

Voice Auction

Length

Width

Height

Weight (g)

Specimen Dimensions

Don/Con

Mineral Data



Photographed by: Michael Haritos

Specimen Number Lot No. Donor/Consignor No

Specimen Name

Specimen Location

SpecimenType

Auction Type

Length Width Height Weight (g)

Specimen Dimensions Don/Con

Mineral Data

Photo 1



Photo 2



Photo 3



Photographed by:

Specimen Number 2022-164 Lot No. Donor/Consignor No 7

Specimen Name Lot of 10 TNs

Specimen Location Malachite Lyon France. Linarite Bingham NM. Enargite Butte MT. Libethenite Cuba NM. Tetrahedrite American Tunnel CO. Olsunilite Lane Co. OR. Sunyite La Paz City AZ. Rhodochrosite, CO. Phenakite Mt Antero CO. Azurite Bisbee AZ.

SpecimenType Donation

Auction Type Voice Auction

Length Width Height Weight (g)

Specimen Dimensions Don/Con

Mineral Data

Photo 1



Photo 2



Photo 3



Photographed by: Michael Haritos

Specimen Number 2022-165 Lot No. Donor/Consignor No 7

Specimen Name Lot of 9 TNs

Specimen Location 3 xls. of Quartz Pakistan. Tsavorite Pakistan. Beryl(Heliodor)Vietnam. Forsterite Pakistan. Scolecite Pune (Poona) India. Vayrynenite Pakistan. Pyromorphite, & Cerussite Guangxi, China. Beryl(Goshenite) Sichuan China. Rosasite & Smithsonite N.S. Wales Australia

SpecimenType Donation

Auction Type Voice Auction

Length Width Height Weight (g)

Specimen Dimensions Don/Con

Mineral Data

Photo 1



Photo 2



Photo 3



Photographed by: Michael Haritos

Specimen Number 2022-166 Lot No. Donor/Consignor No 7

Specimen Name Lot of 12 TNs

Specimen Location Osumilite MacKenzi Pass OR. Turquoise Correlas NM. Beudantite Gold Hill UT. Baryte on Orpiment NV. Brochantite Blanchard NM. Hemimorphite with Cerussite Pinal Co. AZ. Pirssonite San Bernadino CA. Descloizite Pinal Co. Az. Nontronite Wolf Creek Pass CO. Malachite after Cuprite Bisbee, AZ. Cerussite Blanchard Mine, NM. Hydrozincite Cerro Gordo CA. 2 specimens of Rose Quartz Plumbago Mt. Newry ME.

SpecimenType Donation

Auction Type Voice Auction

Length Width Height Weight (g)

Specimen Dimensions Don/Con

Mineral Data

Photo 1



Photo 2



Photo 3



Photographed by: Michael Haritos

Specimen Number Lot No. Donor/Consignor No

Specimen Name

Specimen Location

SpecimenType

Auction Type

Length Width Height Weight (g)

Specimen Dimensions Don/Con

Mineral Data

Photo 1



Photo 2



Photo 3



Specimen Number Lot No. Donor/Consignor No

Specimen Name

Specimen Location

SpecimenType

Auction Type

Length Width Height Weight (g)

Specimen Dimensions Don/Con

Mineral Data

Photo 1



Photo 2

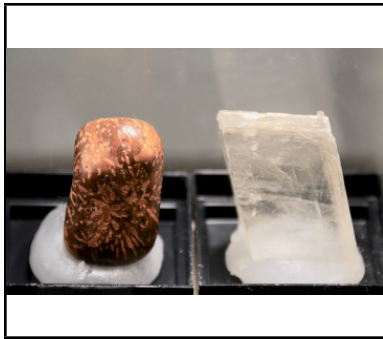


Photo 3



Photographed by:

Specimen Number 2022-169 Lot No. Donor/Consignor No 7

Specimen Name Lot of 6

Specimen Location Stichtite S. Africa. Amethyst Uruguay. Andalusite Lancaster MA. Fluorite Hunan China. Quartz (citrine) Brazil. Petrified Wood Judi's Bridge, Hawaii

SpecimenType Donation

Auction Type Voice Auction

Length Width Height Weight (g)

Specimen Dimensions Don/Con

Mineral Data

Photo 1



Photo 2



Photo 3



Photographed by: Michael Haritos

Specimen Number Lot No. Donor/Consignor No

Specimen Name

Specimen Location

SpecimenType

Auction Type

Length Width Height Weight (g)

Specimen Dimensions Don/Con

Mineral Data

Photo 1



Photo 2



Photo 3



Photographed by:

Specimen Number 2022-171 Lot No. Donor/Consignor No 7

Specimen Name Lot of 8

Specimen Location Celestite IL. Wavelite AK. Witherite Roseclaire IL. Fluorite, Celestite, & Calcite Clay Center OH. Andradite Cornwall Iron Mine PA. Pyromorphite Phoenixville PA. (3) Fluigerite Tubes Libian Desert. Iron - Nickel Meteorite Canyon Diablo AZ.

SpecimenType Donation

Auction Type Voice Auction

Length Width Height Weight (g)

Specimen Dimensions Don/Con

Mineral Data

Photo 1



Photo 2



Photo 3



Photographed by: Michael Haritos

Specimen Number Lot No. Donor/Consignor No

Specimen Name

Specimen Location

SpecimenType

Auction Type

Length Width Height Weight (g)

Specimen Dimensions Don/Con

Mineral Data

Photo 1



Photo 2



Photo 3

