

## The 2013 Specimen Competition Categories & Rules

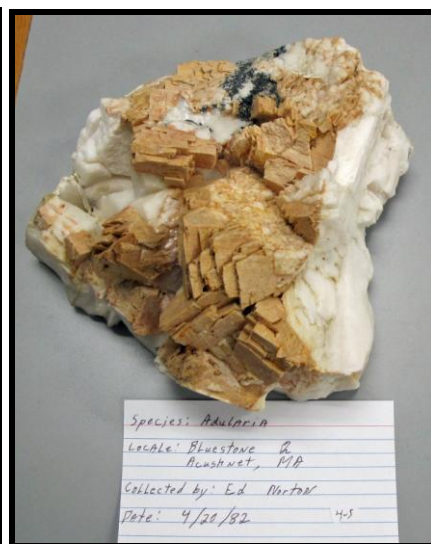
The individual specimen competition categories for 2013 are listed below the example specimen photographs from the 2011 competition:



Open Competition – Outside New England



Thumbnail Specimen



Self-Collected Massachusetts

### A) Thirteen Self-Collected Categories for Individual Specimens:

- Connecticut/RI
- Maine
- Massachusetts
- New Hampshire
- Vermont/New York
- Outside New England and New York
- New Collector (<5 years of collecting experience)
- Previous year (Nov. 2012 thru the present)
- 2013 BMC Field Trip
- Fossil (any locality)
- Young Collector (16 years old or younger)
- Thumbnail specimen (any specimen that fits inside a 1" perky box – can be any mineral species or locality)
- Self-Collected Best of Show (1<sup>st</sup> & 2<sup>nd</sup> Place)

### B) Five Open Competition Categories for Individual Specimens:

- New England (i.e.: VT, NH, ME, MA, CT, and RI)
- Outside New England
- Thumbnail Specimen (any mineral species or locality)
- Featured Mineral Species: Beryl
- Featured Group: Minerals that crystallize in the isometric crystal system (some typical examples include copper, cuprite, diamond, fluorite, galena, garnet group minerals, gold, magnetite and pyrite - to get a list of all mineral species in this system go to the website <http://webmineral.com/crystal.shtml> and click on the link for isometric crystal form then click on each link for the 5 classes that make up the isometric system):

### Basic Rules for Individual Specimen Categories:

- All Specimens must be accompanied by a label indicating mineral species, specific locality and approximate collection date (if self-collected). You may also include your name on the label but are not required to.
- For the self-collected categories, each specimen submitted must have been personally collected by the BMC member submitting it.
- For the open competition categories, the specimen can be self-collected, purchased, gifted or bartered for.
- Members may submit up to 2 specimens in each category (but most people just submit one specimen per category).

- e) All specimens in each category will be grouped together to facilitate judging.
- f) Judging will be done by everyone present using ballots supplied at the meeting.
- g) There will be only one winner in each category except the self-collected best of show (1st and 2nd place awards).
- h) Only self-collected specimens are eligible for the “Best-of-Show” awards.
- i) A single specimen cannot be entered in more than one category.
- j) Winning specimens will be recorded and will be ineligible for entry in future specimen contests (but may be combined with other specimens in a display in future years)
- k) Other than the 2013 BMC field trip and the previous year categories, there is no date restriction on self-collected specimens.

### C) Specimen Display Competition

The third basic competition is for displays of 10 or more mineral or fossil specimens organized around a single theme of the exhibitor's choosing (1st and 2nd place awards will be made in this category). The specimens can be self-collected, purchased, gifted or bartered for. Photos of some example displays from the 2011 competition are included below:



Nathan Martin photographs

#### **Basic Rules for the Display Competition:**

- a) Since the space for displays is limited, each display should be no bigger than 36” x 24”.
- b) Each BMC member entering a display must provide his/her own display case or a display board (fancy cases are not needed – a 30” x 20” piece of black foam core makes an excellent display board).
- c) Each specimen must be accompanied by a label indicating species & locality
- d) The BMC member entering a display is free to choose his or her own theme (for example; a specific mineral species, locality, region, environment, or mineralogical property).
- e) Judging will be done by everyone present using ballots supplied at the meeting. To encourage good labeling and thoughtful arrangement of specimens, judging is based on a point system that awards up to 35 points for specimen quality, up to 5 points for labeling, and up to 10 points for presentation.

If you have any questions about the rules or competition categories please contact Nathan Martin ([rocknate@gmail.com](mailto:rocknate@gmail.com)).